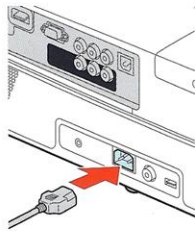


Quick Setup

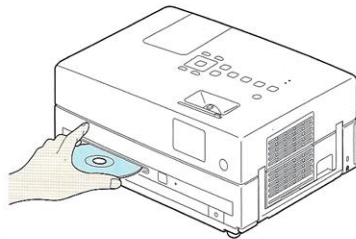
Before using the projector, make sure you read the safety instructions in the on-screen *User's Guide*.

Play a DVD

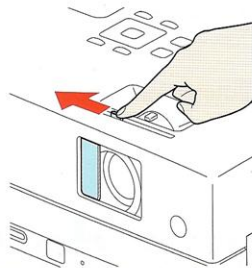
- 1 Plug in the projector. The  power light on the projector turns orange.




- 2 Insert your DVD into the slot. The projector will power on automatically.

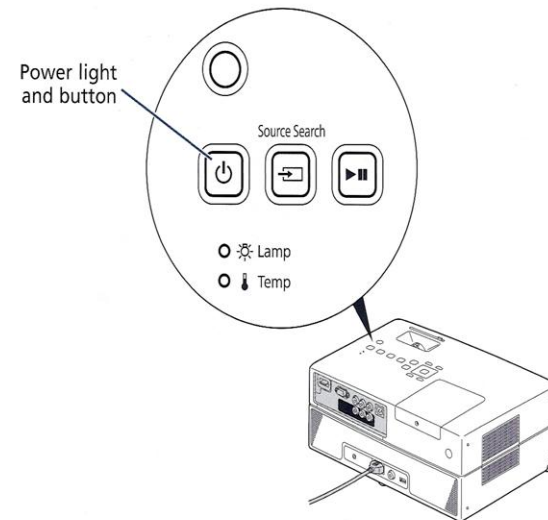




- 3 Open the lens cover slide all the way. Your movie will be displayed.




See "Adjust the image" for more information.

- 4 Press the  power button on the projector or remote control.

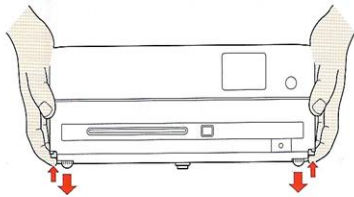


The projector beeps, the  power light flashes green, and the projector warms up. When the  power light stays green, the projector is ready to use.

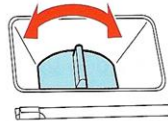
NOTE: To shut down the projector, press the  power button, wait for the two confirmation beeps, then unplug it. You don't have to wait for the projector to cool down.

Adjust the image

- 1 If you don't see an image, press the **Source** button (remote control) or **Source Search** button (projector) to select the image source.
NOTE: If you still see a blank screen or have other display problems, see the on-screen User's Guide.
- 2 To raise the image, press the foot adjustment levers and lift the front of the projector. Release the levers to lock the feet in position. If the image is horizontally tilted, you can turn the feet to level it.



- 3 To reduce or enlarge the image, press the **Visual Setup** button, select **Signal**, and press **Enter**. Press the up or down arrow buttons until you see the **Zoom** menu, then press the left or right arrow buttons to change the image size.
- 4 Turn the focus ring to sharpen the image.



- 5 If your image looks like or , you've placed the projector off to one side of the screen at an angle. Place it directly in front of the center of the screen, facing the screen squarely.
- 6 If your image looks like or , press the or **Keystone** button on the remote control to correct it.

Other Connections

Connect up to 3 video devices and use the remote control to switch between them. You can also connect a microphone or USB thumb drive.

