



Zubri Patio Heater Assembly Instructions

From this.....To this... In 5 Easy Steps



- Easy Storage
- Easy to Transport
- Easy to Carry

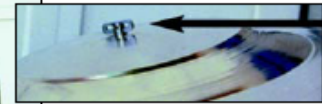
1. Attach Legs

- Snap legs in place.



2. Attach Reflector

- Remove reflector from case.
- Attach reflector onto threaded rod.
- Fold over special catch, securing reflector (Or place wing nut on the top and tighten).



3. Propane Tank

- Hang propane tank using bracket provided.
- Attach hose to propane tank, tighten securely.
- Heater is now stabilized.



4. Attach Skirt

- Wrap skirt around heater legs to cover propane tank.
- Zip up and secure with velcro closure.



5. Light & Enjoy!

- Turn on gas at propane tank.
- Hold match under burner head.
- Push and turn gas control knob to middle position.
- After heater lights, hold down control knob for 45 seconds, release slowly and adjust heat.


SCHAEFER
Ventilation Equipment
www.schaeferfan.com
1-800-779-3267

©2005 Schaefer Ventilation Equipment

Specifications

- 40,000 BTU
- 7'3" high
- Weighs 49 lbs.
- Heats approximately 18'-20' wide area
- Utilizes 20 lb. propane tank
- Outdoor use only

Safety Information

Follow these few simple guidelines for the safe use of your patio heater and to ensure the health and safety of yourself and others who may be affected.

- Patio heaters are for outdoor use only. The combustion products leaving the heater are very hot. On no account should they be used in enclosed space, or inside a tent or marquee or close to umbrellas.
- They may be used under awnings only if the manufacturer's instructions permit it. Awnings should not impede the escape of combustion products.
- Heaters should not be moved when alight.
- Care is needed when positioning a heater near terraces or balconies to ensure the products of combustion do not adversely affect people or property at burner level.
- Heaters should be positioned in a shielded area to prevent them blowing out.